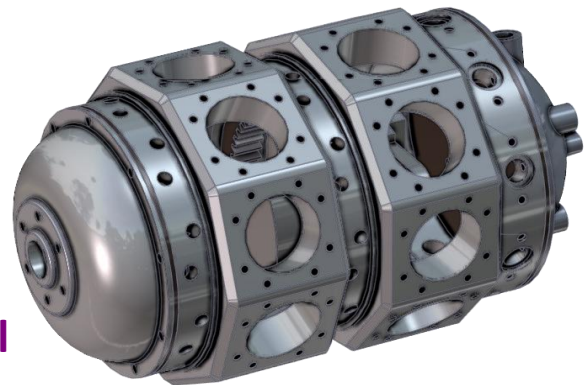


R18 Radial Engine Core Assembly Instruction Document

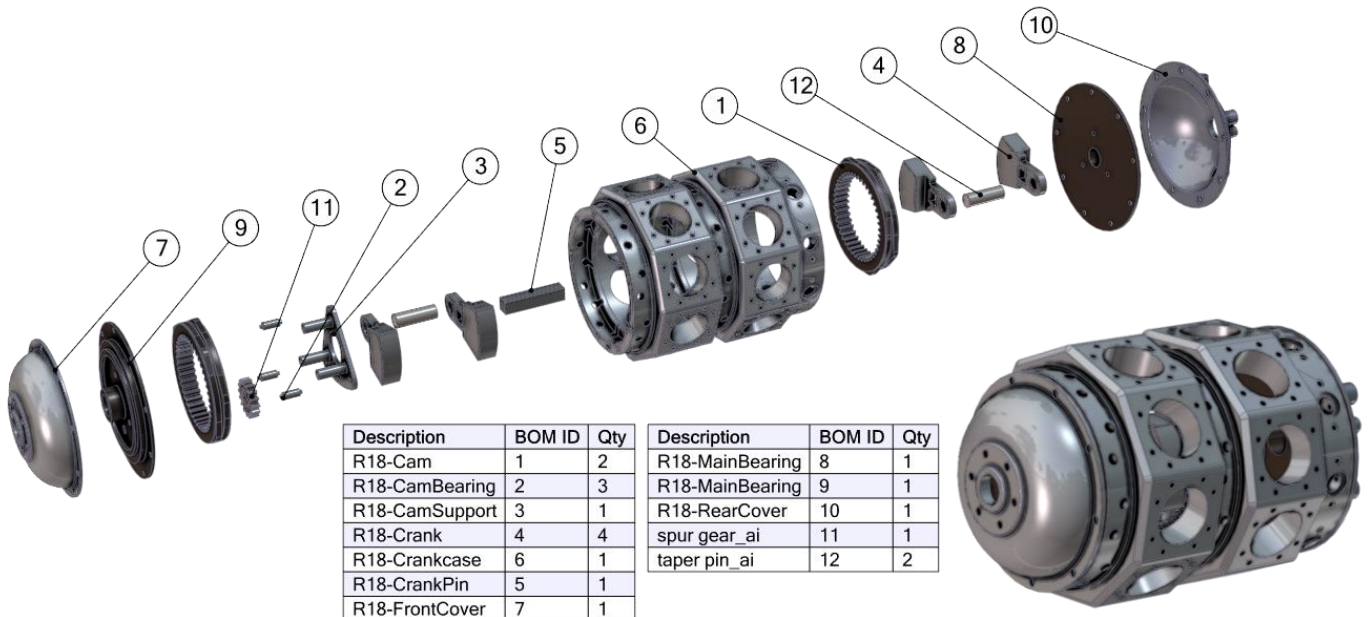


3dvia  composer

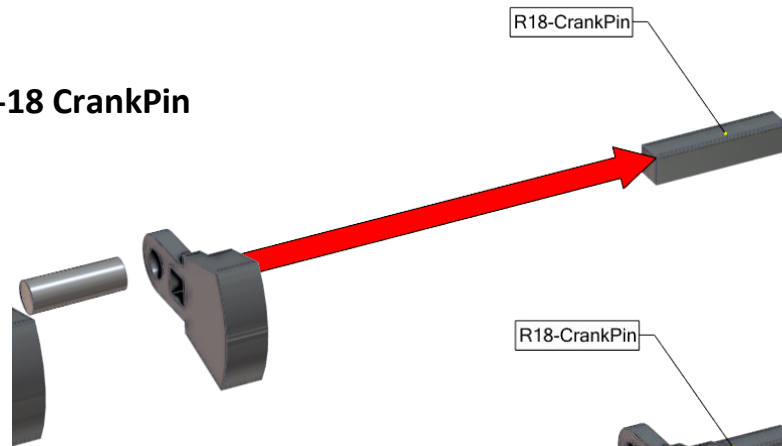


[Click on Image to open 3D Model](#)

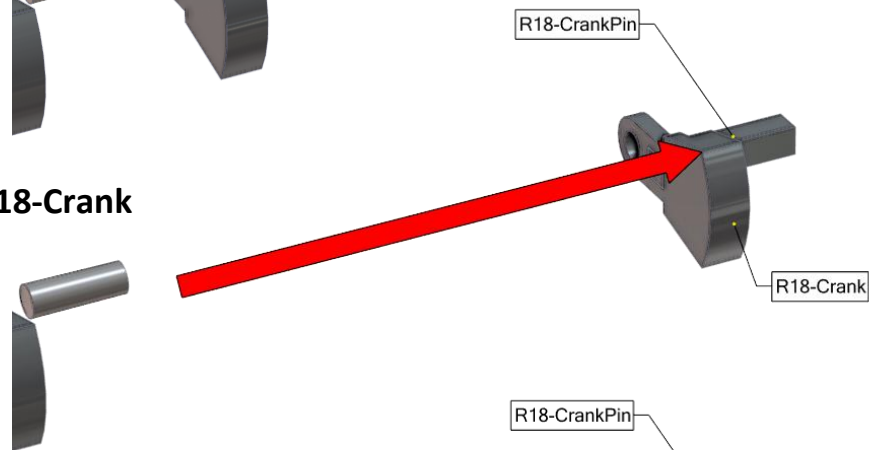
Stage 1: Engine Core assembly



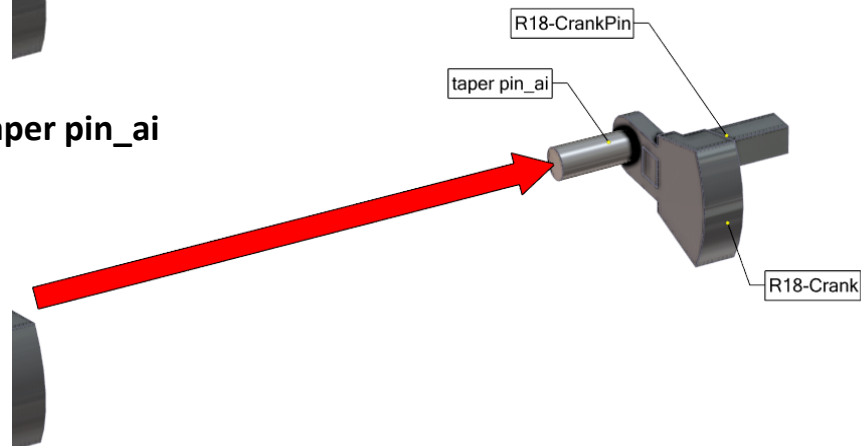
STEP 1: Isolate R-18 CrankPin



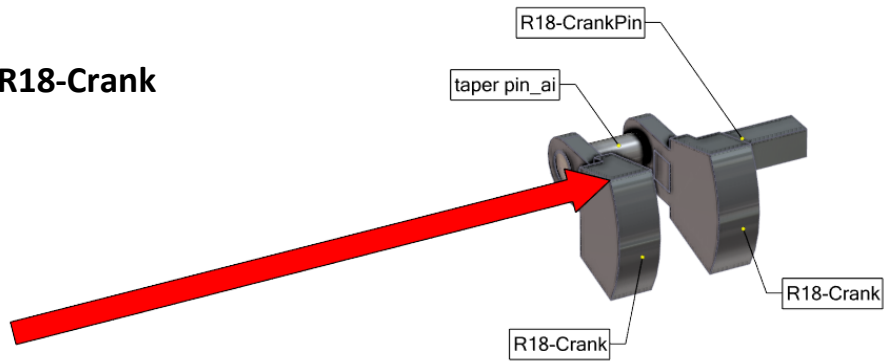
STEP 2: Install R18-Crank



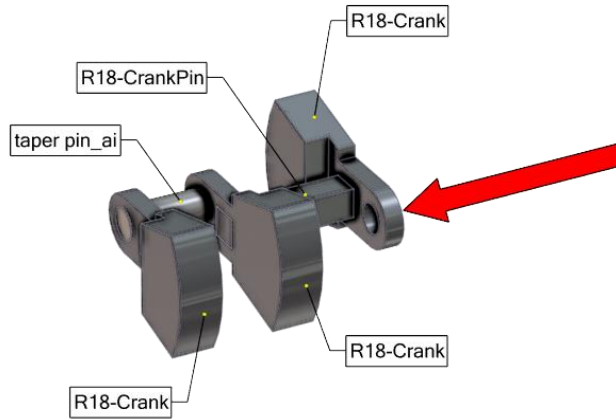
STEP 3: Install taper pin_ai



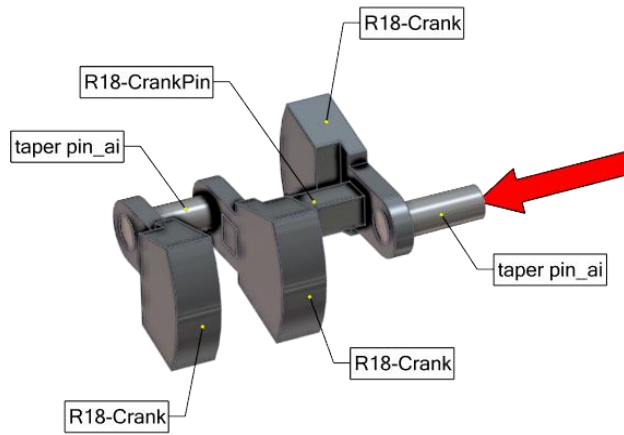
STEP 4: Install R18-Crank



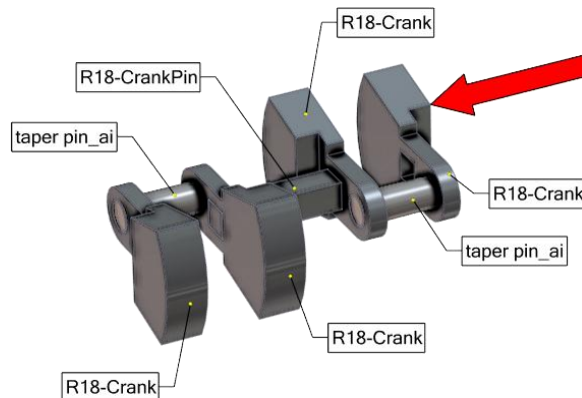
STEP 5: Install R18-Crank



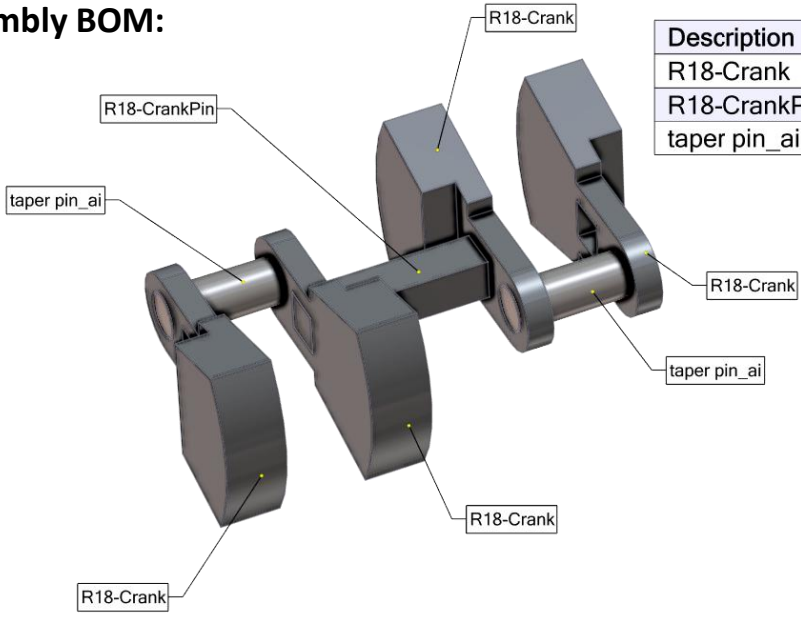
STEP 6: Install taper pin_ai



STEP 7: Install R18-Crank



Crank Assembly BOM:



Description	BOM ID	Qty
R18-Crank	1	4
R18-CrankPin	2	1
taper pin_ai	3	2

