



HAWK RIDGE SYSTEMS

CASE STUDY

UNIFILLER

The world leader in the baking depositing and cake building technology uses 3DVIA Composer to make high quality work instructions faster and easier than ever before.

Unifiller creating value in 3DVIA Composer

Work instructions are completed 80% faster.

Exploded views are created 70% faster in 3DVIA Composer.

The entire company is now leveraging 3D data through the use of the free 3DVIA Composer Player.

Reduce the amount of text in user manuals by 20% and cutting the amount of pages by 50%.

Experts in the Baking and Food Production Industry

Unifiller is a dedicated team of professionals who have the knowledge and expertise of the Baking and Food Production Industry. The owners are highly creative entrepreneurs who are committed to developing new technologies through unique and innovative machine designs.

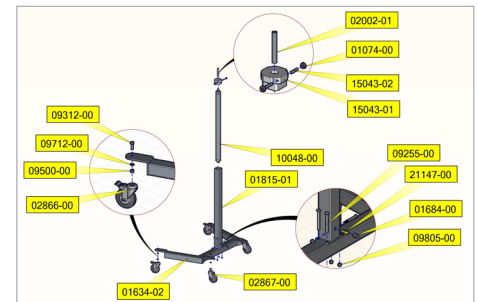
Unifiller provides solutions for precise portion control in the baking and food industry with an extensive range of single piston depositors, transfer pumps and multiple head units. Unifiller specializes in producing both fully and semi automated cake production systems.

SolidWorks not optimal for creating work instructions

Assembly technicians were not provided work instructions and their training was provided by the senior assembly builder. Unifiller wanted to remove the assembly technicians' dependency on the senior assembly builder, to allow him to focus on productivity, and wanted documentation that would be available for years to come.

Configurations were being created for each step of the assembly process. Each configuration had different cutting planes and various hidden components. Model views had to be adjusted just right and then inserted into SolidWorks drawings for each configuration. Exploded views were consuming too much time for each step of the assembly process. Finally, notes and annotation were inserted into the drawings and if a design changed happened, the entire process would have to be redone.

By utilizing over 20 different configurations in multi sheet SolidWorks drawings for each

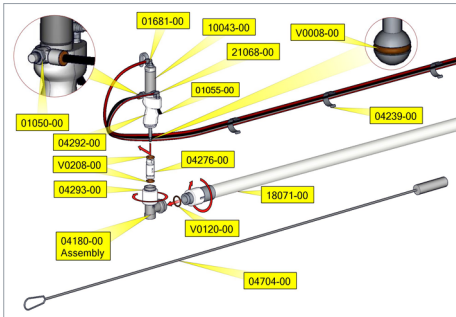


step of the assembly process, file sizes were growing exponentially. They began to be difficult to navigate and manage. This process strained the engineering workstations and compromised the performance of SolidWorks. The drawing assembly files began to take several minutes to load and the large file sizes were over loading the network. Unifiller discovered that using SolidWorks to create high quality work instructions was not working. They knew there had to be a better way.

3DVIA Composer is a high performer

Ian Spencer, Engineering, Drafting & Documentation Manager, attended one of Hawk Ridge Systems' technical seminars and came across the solution for his team, 3DVIA Composer. Creating instruction views with 3D annotations, custom parts lists and detail views had never been easier. With 3DVIA Composer, Unifiller is now able to create views for each step in the assembly processes quickly and easily without compromising file size. With the XML based software, 3DVIA composer easily handled the large assemblies with greater performance and shorter load times.

Unifiller is able to quickly and easily hide components to show only what is important



in the assembly step. Each step has a custom BOM to include only the parts involved in a particular step of the assembly process. The ease of use of 3DVIA Composer quickly demonstrated it was the solution Unifiller was looking for. "I was able to get up to speed in about a week" says Daniel Ciechonski, Operation technologist. Unifiller published their first complete manual approximately 6 weeks after beginning to use 3DVIA software.

Originally Unifiller tried to insert images from 3DVIA Composer into Microsoft PowerPoint. However, they found that using the free 3DVIA Composer Player was a quicker, easier way of sharing the documents internally. They were seamlessly and effortlessly able to move to a paperless environment. The entire company can now view the 3D data without affecting the engineering data. Distributing work instructions and new procedures throughout the organization is now easily done by using the free 3DVIA Composer Player. "We immediately saw a use for the 3DVIA

Composer player. Assembly technicians can rotate the model and double check the orientation." says Ian Spencer, Engineering, Drafting & Documentation Manager. Design changes are quickly rolled out by updating the 3DVIA Composer content directly from the SolidWorks CAD data.

Success

Unifiller's chief engineer was onsite with a customer who needed quick work instructions for a particular procedure. While the chief engineer was still onsite, Ian Spencer and his team were able to quickly create work instructions for the service procedure and distributed them in PDF format. While still onsite, the chief engineer was able to show the customer the 3D service instructions utilizing the free 3DVIA Composer Player and also leave instructions behind for the customer in PDF format.

3DVIA Composer brings value to Unifiller

Since using 3DVIA Composer, Unifiller has drastically cut down the time it takes to create assembly work instructions. An assembly manual that previously took 6 weeks to produce, using SolidWorks drawings, now takes little more than a week with 3DVIA Composer. Once they established a method for creating one manual, Unifiller was able to create manuals for two other products each taking only 3 days to complete. "We are able to create our manuals 80% faster and exploded views 70% (faster)" says Daniel Ciechonski. With unmatched performance and ease of use,

exploded views are quickly created with 3DVIA Composer.

With how easily and quickly Unifiller is able to produce images they are adding more images in their manuals and reducing the amount of text by 20%. The amount of pages required to convey the same, if not more information has been reduced by 50%, decreasing the printing costs. Not only does this reduce the amount of work involved in translating their documents, but it also allows them to obtain the CE Mark more readily. The CE Mark is a mark that indicates that a product has met the EU consumer safety, health and environmental requirements.

"There are only three users now, but that will expand over time" says Ian Spencer. Ian is expecting that Unifiller will see a six to nine month ROI in just the documentation department alone.

"We immediately saw a use for the 3DVIA Composer Player. Assembly floor technicians can rotate the 3D model and double check the orientation themselves."

Ian Spencer
Engineering, Drafting & Documentation Manager
Unifiller Systems



HAWK RIDGE SYSTEMS

USA 1.877.266.4469
Canada 1.866.587.6803

info@hawkridgesys.com
www.hawkridgesys.com

About Hawk Ridge Systems

Hawk Ridge Systems, consistently exceeding customer expectations as a design technology partner by providing top tier customer service and innovative technical support.

By providing the largest and most knowledgeable SolidWorks support team in the country we help our customers successfully compete while shortening product development cycle times. Hawk Ridge Systems operates in 12 facilities throughout four

western states and British Columbia, Canada. All locations offer top tier technical support, training and professional services.

Our expertise has helped us quickly grow to be one of the top SolidWorks, Simulation, and PDMWorks providers in the world. We are an engineer heavy organization, which allows our customers to maximize their CAD, Analysis and PDM productivity, and return on investment.