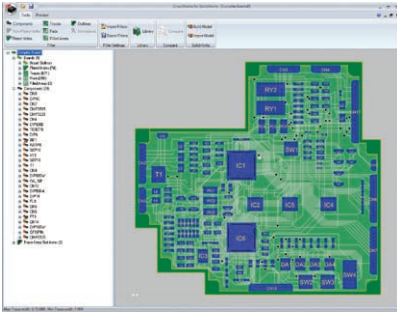


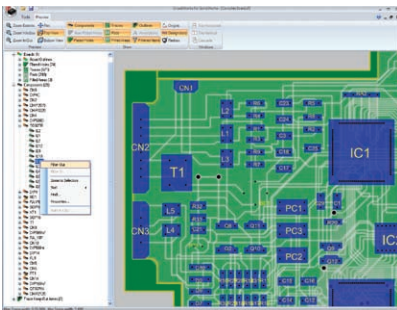
CircuitWorks

AN INTEGRATED BIDIRECTIONAL ECAD TRANSLATOR

CircuitWorks® is a powerful electronic CAD (ECAD) translator that enables you to create accurate 3D models of circuit boards in SolidWorks. From within SolidWorks, CircuitWorks empowers your design team to deliver highly detailed models automatically – and gives your company a competitive global edge.



CircuitWorks can open up and display the full structure of a IDF file.



CircuitWorks ability to filter out unnecessary components to help reduce file size.

Design better products by sharing data efficiently between electrical and mechanical design teams

Manipulate files from a wide variety of ECAD systems. Work with IDF 2.0, 3.0, 4.0 or PADS (*.asc) data from printed circuit board (PCB) designers to build accurate SolidWorks models of PCBs. Automatically show outlines, keepouts, and regions. When used with the IDF 4.0 file format CircuitWorks can also add traces, pads, and filled areas to SolidWorks assemblies.

Maximize the integrated bidirectional system. Save valuable time through collaboration in the design process. After receiving the electrical design data, modify component locations as needed in the IDF file then export this back to your ECAD system for changes. Alternatively, develop the required PCB package size in SolidWorks then export to your ECAD tools to develop the electrical design.

Add annotations if required. Annotate your models with information from the ECAD file to expedite the design process. Locate a specific component in SolidWorks or show the changes between two IDF or PADS files.

Unique capabilities. Take advantage of a full array of built-in tools and innovative functions:

- Powerful filtering tools – Filter in or out components, holes, traces, and other features by their size, name, or position on the board.
 - ECAD files can contain features not required in SolidWorks. For example, a file may contain thousands of small component holes that would result in a very large SolidWorks model. When you apply a filter in CircuitWorks, the Preview Image and treeview features instantly update to show the effects of your changes.
- Preview Image – Instantly view IDF or PADS data before building the assembly in SolidWorks.
 - The Preview Image automatically shows the board outline, cutouts, plated and nonplated holes, as well as outlines, keepouts, traces, pads, filled areas, reference designators, and annotations.*
 - You can hide or show features in the Preview Image as required. Because filtered items are “greyed out,” your design team can save time by viewing the effects of applying filters before they create the assembly.
 - Use the Preview Image when exporting an assembly from SolidWorks into CircuitWorks to ensure that your exported data is correct before sending it to your ECAD system.



*Pads, traces, and filled areas are only available when reading the IDF 4.0 file format.

